



Exercise Room



Living Room



Lobby



Office / Den

Kitchen



Bathroom



Party Room



Party Room



Living / Dining Room

*1829 Queen Street East
Suite 310*



Kitchen



Bedroom

1829 Queen Street East # 310



Newly Renovated Luxury "Beacon" Suite in Modern Beach Low Rise Building

Building Features :

- * Well constructed by the Pemberton Group, and well managed (onsite) by Orion Management.
- * Spacious entry **Lobby**, with side-by side North front doors. Passage to South back door.
- * Four visitors' parking spots are at back. Extra public parking is cheap (approx: \$3 overnight).
- * Residents' parking is all underground. Residents' individual lockers are also underground.
- * The 2nd floor has a large well-equipped **Exercise Room** (with wide balcony) on its North side, and an enormous **Party Room** on its South side (with a huge open terrace for summer tans).
- * There are 2 elevators for only 4 floors ! Lobby security cameras connect to each Unit's TV.
- * Pets are allowed.

General Features of Unit 310:

- * Newly renovated: **New Engineered Hardwood Floors**, New Kitchen cabinet doors, Freshly repainted, Upgraded Lights, Deluxe Kitchen Drawers. **Its immaculate!**
- * Located on quiet 3rd floor. It is near the elevators, but not opposite them.
- * The Suite has a building-connected Security system with its own front-door coded pad.
- * Guests can buzz in at the Building's front door, which connects them to the Unit's telephone.
- * The owner can control temperature of the in-Suite furnace and air conditioner. (The costs of heating, cooling, light, water & security system are **all included** in monthly maintenance fees.)
- * Parking spot is convenient to the elevators. Storage Locker and Parking space have separate Deed

Foyer Features :

- * The front door entry area has a ceramic tile.

Office Den :

- * The **Office / Den** has Hardwood floor and a huge coat closet convenient to the front door.

Living Room / Dining Room Features :

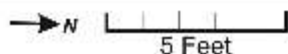
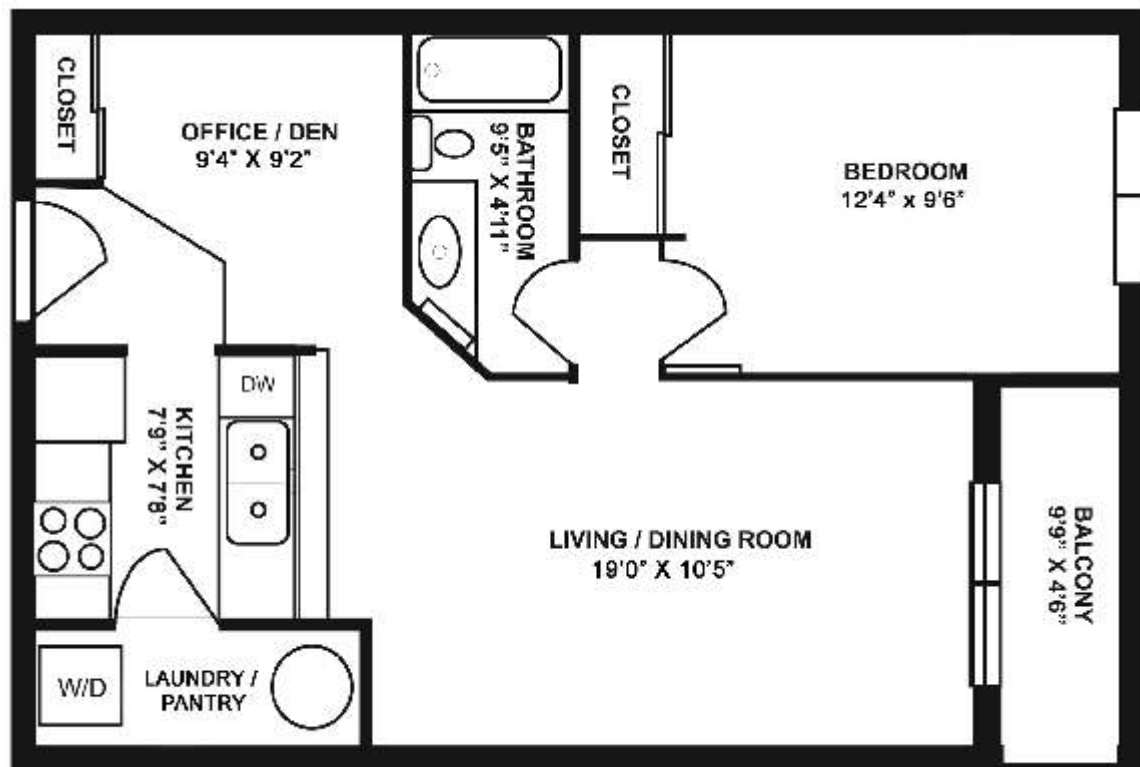
- * This is a large and bright open-plan area. The Engineered hardwood floor is New.
- * The North-facing slide-open, walk-out door to the Balcony has vertical window blinds.
- * The **Balcony** has great tree-top views East, North & West. BBQ-ing is permitted here !

Kitchen Features :

- * Above the **Breakfast bar** are overhead cabinets for extra storage. Ceramic Tile floor.
- * Appliances are Fridge, Stove with Microwave/range hood and built-in Dishwasher. Double sink.
- * Note the upgraded pull-out shelves in the below-counter cabinet.
- * The Laundry/ Pantry has stacked Washer / Dryer and very useful door shelves.

Master Bedroom Features :

- * Big closet has double doors and large window. Hardwood floor. Window has vertical blinds.
- * **4-piece Washroom** has Ceramic tile floor. Vanity has pull-out storage racks.



This plan is for illustration only and should not be considered accurate. Copyright 2009 Nick Boothby. Do not scale, do not use for building purposes.

<http://www.inthebeach.com>

Virtual Tour and More Photos: <http://www.inthebeach.com>

Royal LePage Homeward

Brokerage, Independently owned and operated

1858 Queen Street E Toronto, ON, M4L 1H1

Nick Boothby and Christine DeMerchant

Sales Representatives

416 698 2090

nick@inthebeach.com